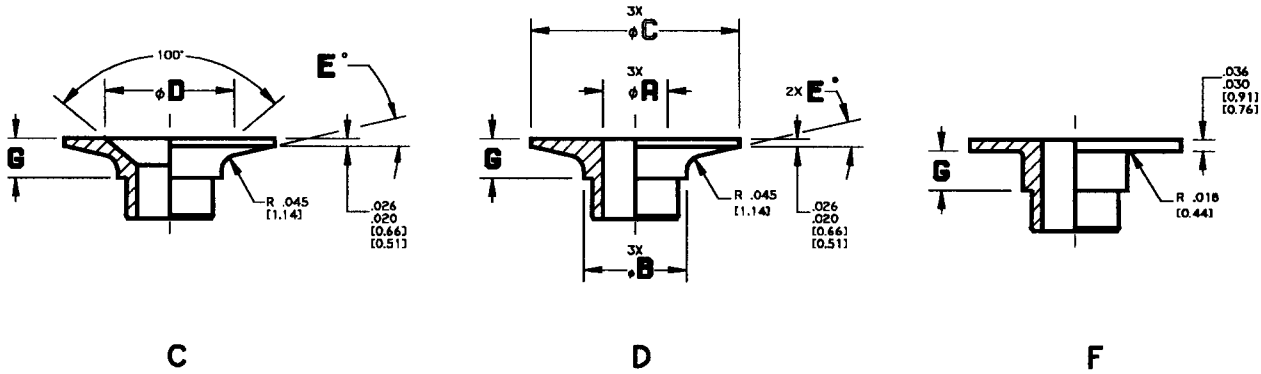
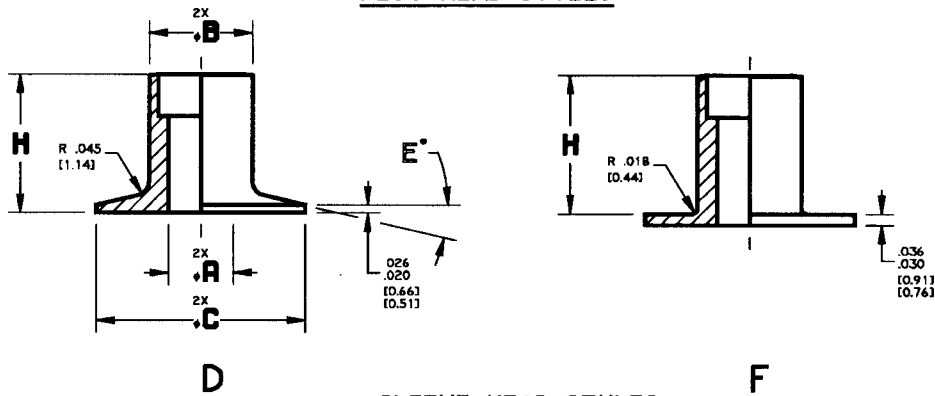




INSERTS FOR METALLIC FACE SKIN PANEL



PLUG HEAD STYLES



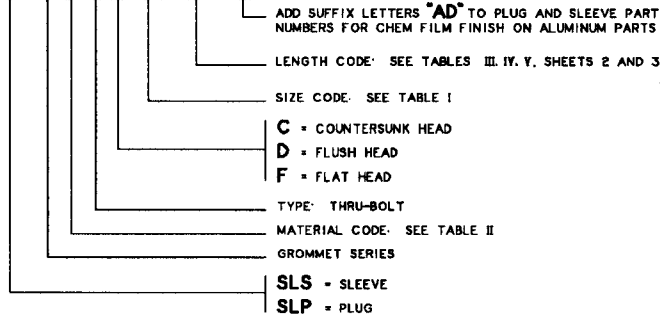
SLEEVE HEAD STYLES

TABLE II

MATL CODE	MATERIAL	STANDARD FINISH
0	AL ALLOY 2024-T4 PER AMS-QQ-A-225/6	ANODIZE PER MIL-A-8625, TYPE 1, CLASS 1
6	CRES 303 PER ASTM A582	PASSIVATE PER AMS-QQ-P-35
7	TITANIUM PER AMS4928	NONE
9	CARBON STEEL PER ASTM A108	CADMIUM PLATE PER QQ-P-416, TYPE II, CLASS 2

EXAMPLE OF PART CODING

SLS 1 0 2 F 10 - 08 AD (INCH)
 SLP 1 0 2 C 10 - 1 AD (INCH)
 SLS 1 0 2 F M5 - 08 AD (METRIC)
 SLP 1 0 2 C M5 - 1 AD (METRIC)



APPLICATION

A MECHANICAL SPACER FOR USE IN PANELS WITH METAL FACE SKINS. INSTALLATION TO BE MADE FROM BOTH SIDES OF PANEL.

TABLE I

SIZE CODE	.A +.002 [0.05] -.003 [0.08]	.B ± .002 [0.05]	.C	.D +.003 [0.08] -.004 [0.10]	E'
4	.116 [2.95]	.216 [5.49]	.375 [9.52]	.229 [5.82]	13°
6	.142 [3.61]	.278 [7.06]	.500 [12.70]	.285 [7.24]	13°
M3	.122 [3.10]	.278 [7.06]	.500 [12.70]	.236 [6.00]	13°
8	.168 [4.27]	.278 [7.06]	.500 [12.70]	.332 [8.43]	13°
M4	.161 [4.10]	.278 [7.06]	.500 [12.70]	.315 [8.00]	13°
10	.194 [4.93]	.309 [7.85]	.625 [15.88]	.385 [9.78]	13°
M5	.205 [5.20]	.309 [7.85]	.625 [15.88]	.394 [10.00]	13°
25	.256 [6.50]	.372 [9.45]	.750 [19.05]	.507 [12.88]	14°
M6	.244 [6.20]	.372 [9.45]	.750 [19.05]	.472 [12.00]	14°
31	.318 [8.08]	.466 [11.84]	.875 [22.28]	.600 [15.24]	14°
M8	.323 [8.20]	.466 [11.84]	.875 [22.28]	.630 [16.00]	14°
37	.381 [9.68]	.622 [15.80]	1.062 [26.97]	.767 [19.78]	14°
M10	.406 [10.30]	.622 [15.80]	1.062 [26.97]	.787 [20.00]	14°

NOTES:

- SIZE -25 SLEEVES USED ON .187 PANEL THICKNESS WILL BE SINGLE THRU HOLE.
- ANY COMBINATION OF SLEEVE AND PLUG MAY BE USED.
- "C" HEAD STYLE STANDARD IN PLUG SECTION ONLY.
- SEE SHEETS 2 AND 3 FOR SELECTION OF SLEEVE-PLUG COMBINATIONS FOR GIVEN PANEL THICKNESSES.
- REFER TO SLD100 DATA SHEET FOR INSTALLATION PROCEDURE.
- FASTENERS FOR THICKER PANELS ARE AVAILABLE UPON REQUEST.
- TOLERANCES: .XXX ± .005 [0.13]
ANGLES ± 1°

UNLESS OTHERWISE SPECIFIED
 INTERPRET DIMENSIONS & TOLERANCES PER
 ANSI Y14.5M. ALL DIMENSIONS APPLY AFTER
 PLATING AND PRIOR TO THE ADDITION OF SOLID
 FILM LUBRICANT. 125 [3.2] ALL SURFACES
 TOLERANCES
 .XX .XXX ANGLES [X.X] [X.X X]
 ±.03 ±.010 ±2° ±[0.8] ±[0.25]
 DIMENSIONS IN [] ARE MILLIMETERS

SHUR-LOK CORPORATION
 IRVINE, CALIFORNIA 92614
 TELEPHONE: (949) 474-6000

SHUR-LOK

SHUR-LOK INTERNATIONAL, S.A.
 PETIT-RECHAIN, BELGIUM
 TELEPHONE: (32) 87-32.07.11

INSERT, GROMMET TYPE. THRU-BOLT

SL102

SHEET 1 OF 3

REVISION L 20 OCTOBER 1999

INSERTS FOR METALLIC FACE SKIN PANEL



TABLE III

SLEEVE				PLUG				PANEL THICKNESS
TYPE & HEAD	SIZE CODE	LENGTH CODE	H	TYPE & HEAD	SIZE CODE	LENGTH CODE	G	
SLS102D SLS102F	4 6 8 10 M3 M4 M5	03	103 [2.62]	SLP102C SLP102D SLP102F	4 6 8 10 M3 M4 M5	X	.085 [2.16]	.187 [4.75]
SLS102D SLS102F	4 6 8 10 M3 M4 M5	04	165 [4.19]	SLP102C SLP102D SLP102F	4 6 8 10 M3 M4 M5	0	.085 [2.16]	.250 [6.35]
						1	.116 [2.95]	.281 [7.14]
						2	.147 [3.73]	.312 [7.92]
						3	.179 [4.55]	.343 [8.71]
SLS102D SLS102F	4 6 8 10 M3 M4 M5	06	290 [7.37]	SLP102C SLP102D SLP102F	4 6 8 10 M3 M4 M5	0	.085 [2.16]	.375 [9.52]
						1	.116 [2.95]	.406 [10.31]
						2	.147 [3.73]	.437 [11.10]
						3	.179 [4.55]	.468 [11.89]
SLS102D SLS102F	4 6 8 10 M3 M4 M5	08	415 [10.54]	SLP102C SLP102D SLP102F	4 6 8 10 M3 M4 M5	0	.085 [2.16]	.500 [12.70]
						1	.116 [2.95]	.531 [13.49]
						2	.147 [3.73]	.562 [14.27]
						3	.179 [4.55]	.593 [15.06]
SLS102D SLS102F	4 6 8 10 M3 M4 M5	10	540 [13.72]	SLP102C SLP102D SLP102F	4 6 8 10 M3 M4 M5	0	.085 [2.16]	.625 [15.88]
						1	.116 [2.95]	.656 [16.66]
						2	.147 [3.73]	.687 [17.45]
						3	.179 [4.55]	.718 [18.24]
SLS102D SLS102F	4 6 8 10 M3 M4 M5	12	665 [16.89]	SLP102C SLP102D SLP102F	4 6 8 10 M3 M4 M5	0	.085 [2.16]	.750 [19.05]
						1	.116 [2.95]	.781 [19.84]
						2	.147 [3.73]	.812 [20.62]
						3	.179 [4.55]	.843 [21.41]
SLS102D SLS102F	4 6 8 10 M3 M4 M5	14	790 [20.07]	SLP102C SLP102D SLP102F	4 6 8 10 M3 M4 M5	0	.085 [2.16]	.875 [22.22]
						1	.116 [2.95]	.906 [23.01]
						2	.147 [3.73]	.937 [23.80]
						3	.179 [4.55]	.968 [24.59]
SLS102D SLS102F	4 6 8 10 M3 M4 M5	16	915 [23.24]	SLP102C SLP102D SLP102F	4 6 8 10 M3 M4 M5	0	.085 [2.16]	1.000 [25.40]
						1	.116 [2.95]	1.031 [26.19]
						2	.147 [3.73]	1.062 [26.97]
						3	.179 [4.55]	1.093 [27.76]
SLS102D SLS102F	4 6 8 10 M3 M4 M5	18	1 040 [26.42]	SLP102C SLP102D SLP102F	4 6 8 10 M3 M4 M5	0	.085 [2.16]	1.125 [28.57]
						1	.116 [2.95]	1.156 [29.36]
						2	.147 [3.73]	1.187 [30.15]
						3	.179 [4.55]	1.218 [30.94]

TABLE III CONT'D

SLEEVE				PLUG				PANEL THICKNESS
TYPE & HEAD	SIZE CODE	LENGTH CODE	H	TYPE & HEAD	SIZE CODE	LENGTH CODE	G	
SLS102D SLS102F	4 6 8 10 M3 M4 M5	20	1.165 [29.59]	SLP102C SLP102D SLP102F	4 6 8 10 M3 M4 M5	0	.085 [2.16]	1.250 [31.75]
						1	.116 [2.95]	1.281 [32.54]
						2	.147 [3.73]	1.312 [33.32]
						3	.179 [4.55]	1.344 [34.14]

TABLE IV

SLEEVE				PLUG				PANEL THICKNESS
TYPE & HEAD	SIZE CODE	LENGTH CODE	H	TYPE & HEAD	SIZE CODE	LENGTH CODE	G	
SLS102D SLS102F	25 M6	03	.067 [1.70]	SLP102C SLP102D SLP102F	25 M6	X	.120 [3.05]	.187 [4.75]
SLS102D SLS102F	25 M6	04	.130 [3.30]	SLP102C SLP102D SLP102F	25 M6	0	.120 [3.05]	.250 [6.35]
						1	.151 [3.84]	.281 [7.14]
						2	.183 [4.65]	.312 [7.92]
						3	.214 [5.44]	.343 [8.71]
SLS102D SLS102F	25 M6	06	.255 [6.48]	SLP102C SLP102D SLP102F	25 M6	0	.120 [3.05]	.375 [9.52]
						1	.151 [3.84]	.406 [10.31]
						2	.183 [4.65]	.437 [11.10]
						3	.214 [5.44]	.468 [11.89]
SLS102D SLS102F	25 M6	08	.380 [9.65]	SLP102C SLP102D SLP102F	25 M6	0	.120 [3.05]	.500 [12.70]
						1	.151 [3.84]	.531 [13.49]
						2	.183 [4.65]	.562 [14.27]
						3	.214 [5.44]	.593 [15.06]
SLS102D SLS102F	25 M6	10	.505 [12.83]	SLP102C SLP102D SLP102F	25 M6	0	.120 [3.05]	.625 [15.88]
						1	.151 [3.84]	.656 [16.66]
						2	.183 [4.65]	.687 [17.45]
						3	.214 [5.44]	.718 [18.24]

UNLESS OTHERWISE SPECIFIED
INTERPRET DIMENSIONS & TOLERANCES PER
ANSI Y14.5M. ALL DIMENSIONS APPLY AFTER
PLATING AND PRIOR TO THE ADDITION OF SOLID
FILM LUBRICANT. 125 [3.2] ALL SURFACES
TOLERANCES
.XX .XXX ANGLES [X.X] [X.X X]
±.03 ±.010 ±2° ±[0.8] ±[0.25]
DIMENSIONS IN [] ARE MILLIMETERS

SHUR-LOK CORPORATION
IRVINE, CALIFORNIA 92614
TELEPHONE: (949) 474-6000

SHUR-LOK

SHUR-LOK INTERNATIONAL, S.A.
PETIT-RECHAIN, BELGIUM
TELEPHONE: (32) 87-32.07.11

**INSERT, GROMMET TYPE.
THRU-BOLT**

SL102

SHEET **2** OF **3**

REVISION L 20 OCTOBER 1999

INSERTS FOR METALLIC FACE SKIN PANEL



TABLE IV CONTD

SLEEVE				PLUG				PANEL THICKNESS
TYPE & HEAD	SIZE CODE	LENGTH CODE	H	TYPE & HEAD	SIZE CODE	LENGTH CODE	G	
SLS102D SLS102F	25 M6	12	.630 (16.00)	SLP102C SLP102D SLP102F	25 M6	0	.120 (3.05)	.750 (19.05)
						1	.151 (3.84)	.781 (19.84)
						2	.183 (4.65)	.812 (20.62)
						3	.214 (5.44)	.843 (21.41)
SLS102D SLS102F	25 M6	14	.755 (19.18)	SLP102C SLP102D SLP102F	25 M6	0	.120 (3.05)	.875 (22.22)
						1	.151 (3.84)	.906 (23.01)
						2	.183 (4.65)	.937 (23.80)
						3	.214 (5.44)	.968 (24.59)
SLS102D SLS102F	25 M6	16	.880 (22.35)	SLP102C SLP102D SLP102F	25 M6	0	.120 (3.05)	1.000 (25.40)
						1	.151 (3.84)	1.031 (26.19)
						2	.183 (4.65)	1.062 (26.97)
						3	.214 (5.44)	1.093 (27.76)
SLS102D SLS102F	25 M6	18	1.005 (25.53)	SLP102C SLP102D SLP102F	25 M6	0	.120 (3.05)	1.125 (28.57)
						1	.151 (3.84)	1.156 (29.36)
						2	.183 (4.65)	1.187 (30.15)
						3	.214 (5.44)	1.218 (30.94)
SLS102D SLS102F	25 M6	20	1.130 (28.70)	SLP102C SLP102D SLP102F	25 M6	0	.120 (3.05)	1.250 (31.75)
						1	.151 (3.84)	1.281 (32.54)
						2	.183 (4.65)	1.312 (33.32)
						3	.214 (5.44)	1.344 (34.14)

TABLE V

SLEEVE				PLUG				PANEL THICKNESS
TYPE & HEAD	SIZE CODE	LENGTH CODE	H	TYPE & HEAD	SIZE CODE	LENGTH CODE	G	
SLS102D SLS102F	31 M8	06	.185 (4.70)	SLP102C SLP102D SLP102F	31 M8	0	.190 (4.83)	.375 (9.52)
						1	.221 (5.61)	.406 (10.31)
						2	.252 (6.40)	.437 (11.10)
						3	.283 (7.19)	.468 (11.89)
SLS102D SLS102F	31 37 M8 M10	08	.310 (7.87)	SLP102C SLP102D SLP102F	31 37 M8 M10	0	.190 (4.83)	.500 (12.70)
						1	.221 (5.61)	.531 (13.49)
						2	.252 (6.40)	.562 (14.27)
						3	.283 (7.19)	.593 (15.06)
SLS102D SLS102F	31 37 M8 M10	10	.435 (11.05)	SLP102C SLP102D SLP102F	31 37 M8 M10	0	.190 (4.83)	.625 (15.88)
						1	.221 (5.61)	.656 (16.66)
						2	.252 (6.40)	.687 (17.45)
						3	.283 (7.19)	.718 (18.24)
SLS102D SLS102F	31 37 M8 M10	12	.560 (14.22)	SLP102C SLP102D SLP102F	31 37 M8 M10	0	.190 (4.83)	.750 (19.05)
						1	.221 (5.61)	.781 (19.84)
						2	.252 (6.40)	.812 (20.62)
						3	.283 (7.19)	.843 (21.41)
SLS102D SLS102F	31 37 M8 M10	14	.685 (17.40)	SLP102C SLP102D SLP102F	31 37 M8 M10	0	.190 (4.83)	.875 (22.22)
						1	.221 (5.61)	.906 (23.01)
						2	.252 (6.40)	.937 (23.80)
						3	.283 (7.19)	.968 (24.59)
SLS102D SLS102F	31 37 M8 M10	16	.810 (20.57)	SLP102C SLP102D SLP102F	31 37 M8 M10	0	.190 (4.83)	1.000 (25.40)
						1	.221 (5.61)	1.031 (26.19)
						2	.252 (6.40)	1.062 (26.97)
						3	.283 (7.19)	1.093 (27.76)
SLS102D SLS102F	31 37 M8 M10	18	.935 (23.75)	SLP102C SLP102D SLP102F	31 37 M8 M10	0	.190 (4.83)	1.125 (28.57)
						1	.221 (5.61)	1.156 (29.36)
						2	.252 (6.40)	1.187 (30.15)
						3	.283 (7.19)	1.218 (30.94)
SLS102D SLS102F	31 37 M8 M10	20	1.060 (26.92)	SLP102C SLP102D SLP102F	31 37 M8 M10	0	.190 (4.83)	1.250 (31.75)
						1	.221 (5.61)	1.281 (32.54)
						2	.252 (6.40)	1.312 (33.32)
						3	.283 (7.19)	1.344 (34.14)

REVISION L 20 OCTOBER 1999

UNLESS OTHERWISE SPECIFIED
INTERPRET DIMENSIONS & TOLERANCES PER
ANSI Y14.5M. ALL DIMENSIONS APPLY AFTER
PLATING AND PRIOR TO THE ADDITION OF SOLID
FILM LUBRICANT. 125 [3.2] ALL SURFACES
TOLERANCES
.XX .XXX ANGLES [X.X] [X.X X]
±.03 ±.010 ±2° ±[0.8] ±[0.25]
DIMENSIONS IN | ARE MILLIMETERS

SHUR-LOK CORPORATION
IRVINE, CALIFORNIA 92614
TELEPHONE: (949) 474-6000

SHUR-LOK

SHUR-LOK INTERNATIONAL, S.A.
PETIT-RECHAIN, BELGIUM
TELEPHONE: (32) 87-32.07.11

INSERT, GROMMET TYPE. THRU-BOLT

SL102

SHEET **3** OF **3**