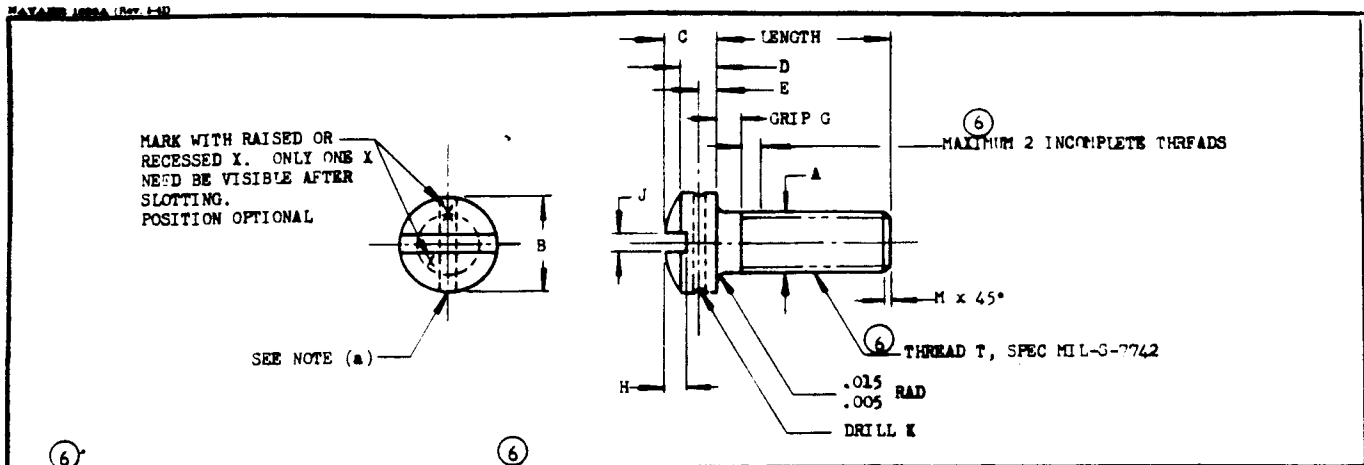


This drawing is the property of the Air Force and Navy Departments and is loaned to you for your information only. It is not to be reproduced, stored in a retrieval system, or transmitted in any form or by any means, electronic, mechanical, photocopying, recording, or by any information storage and retrieval system, without the prior written permission of the Air Force and Navy Departments.



THREAD T	A MAX DIA	B DIA		C		D		E REF	GRIP G		H		J		K DRILL +.004 -.001	M MAX
		MAX	MIN	MAX	MIN	MAX	MIN		MAX	MIN	MAX	MIN	MAX	MIN		
NO. 6-40 NF-3A	.1900	.226	.200	.192	.118	.096	.089	.043	.063	.031	.045	.035	.048	.039	.046	.031
NO. 8-36 NF-3A	.2640	.270	.250	.156	.141	.113	.106	.043	.063	.031	.065	.054	.054	.045	.046	.031
NO. 10-32 NF-3A	.1900	.313	.292	.180	.165	.130	.123	.043	.063	.031	.075	.064	.060	.050	.046	.031
1/4-28 UNF-3A	.2500	.414	.389	.237	.219	.170	.161	.062	.078	.046	.102	.087	.075	.064	.062	.031
5/16-24 UNF-3A	.3125	.518	.490	.295	.276	.211	.201	.078	.078	.046	.130	.110	.084	.072	.070	.047

LENGTH	DASH NUMBERS				
	NO. 6-40	NO. 8-36	NO. 10-32	1/4-28	5/16-24
1/8	6-2	8-2			
1/4	6-4	8-4	10-4		
3/8	+0	6-6	8-6	10-6	416-6
		6-8	8-8	10-8	416-8
1/2	-1/32		8-10	10-10	416-10
			8-12	10-12	416-12
5/8	-1/16		8-14	10-14	416-14
			8-16	10-16	416-16
3/4	+0			10-18	416-18
				10-20	416-20
7/8	-1/16			10-22	416-22
				10-24	416-24
1	+0			10-26	416-26
					416-28
1-1/8	-1/16				416-30
					416-32
1-1/4	+0				516-12
					516-16
1-3/8	-1/16				516-18
					516-20
1-1/2	+0				516-22
					516-24
1-5/8	-1/16				516-26
					516-28
1-3/4	+0				516-30
					516-32
1-7/8	-1/16				
2	+0				

- (a) DRILLED HOLE TO BE ON CENTER APPROXIMATELY AT RIGHT ANGLES TO THE SLOT BUT MUST NOT BREAK THROUGH THE BASE OR TOP (SPHERICAL PORTION) OF THE HEAD.
- (b) SIZES NO. 6-40 AND NO. 8-36 INACTIVE FOR DESIGN AFTER 12 MAY 1950.
- FOR DEFINITION AND APPLICATION OF DRAWING STATUS NOTES, SEE ANA BULLETIN NO. 337.
- (c) REFERENCE DIMENSIONS ARE FOR DESIGN PURPOSES ONLY AND ARE NOT AN INSPECTION REQUIREMENT.
- MATERIAL: STEEL, SPEC AN-S-9, MIL-S-6050, OR OTHER STEEL MEETING THE SAME PHYSICAL REQUIREMENTS.
- HEAT TREAT: 125,000 TO 145,000 PSI TENSILE STRENGTH, SPEC MIL-H-6875.
- FINISH: CADMIUM PLATE, SPEC QQ-P-416, TYPE I, CLASS C.
- EXAMPLE OF PART NO.: AN502-10-10 = NO. 10-32 SCREW, 5/8 INCH LONG.
- SCREWS SHALL BE FREE OF ALL LOOSE OR HANGING BURRS OR SLIVERS WHICH MIGHT BECOME DISLODGED UNDER USAGE.
- DIMENSIONS IN INCHES.

APPROVED 15 MAY 53 REVISED 10 AUG 53 2 30 JUN 53 3 23 JAN 54 4 12 MAY 50 5 5 JUNE 51 6 21 MAY 53

AN109-2

(6) PROCUREMENT SPECIFICATION MIL-S-7839	AIR FORCE-NAVY AERONAUTICAL STANDARD	<h1 style="font-size: 2em;">AN502</h1>
	SCREW - MACHINE, DRILLED FILLISTER HEAD, FINE THREAD	